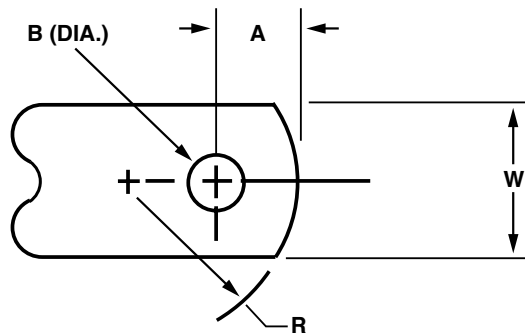
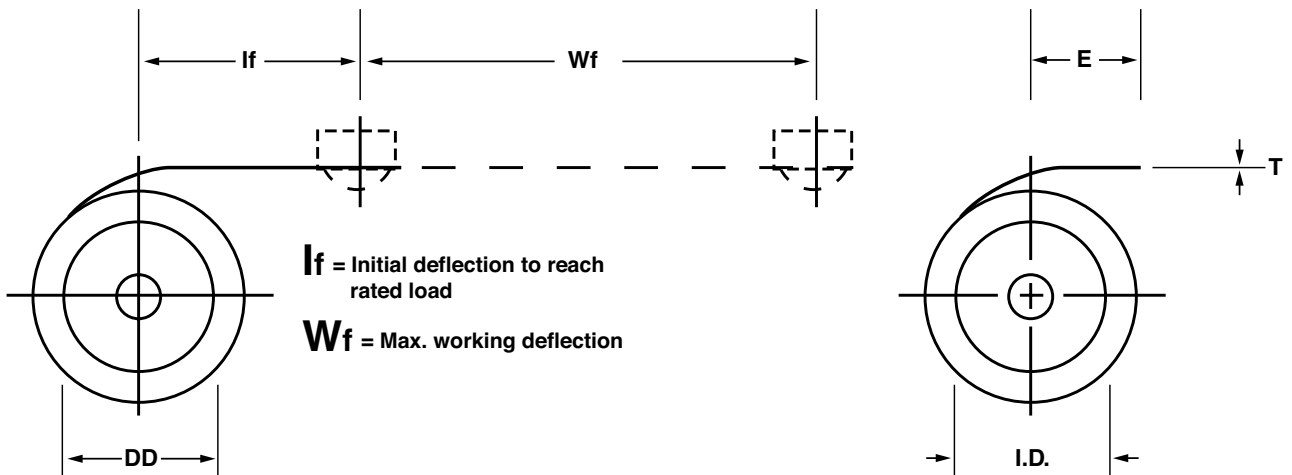


CONSTANT FORCE SPRINGS SPECIFICATION FORM



INDICATE UNITS OF MEASURE (IN. & LB.), (MM & N)

- | | |
|--|---|
| <p>1. MATERIAL _____</p> <p>2. MATERIAL THICKNESS _____</p> <p>3. MATERIAL WIDTH _____</p> <p>4. LENGTH _____</p> <p>5. INSIDE DIA _____</p> <p>6. DRUM DIA _____</p> <p>7. LOAD _____ +/- _____
 @ WORKING DEFLECTION _____</p> | <p>8. LIFE CYCLES _____</p> <p>9. STANDARD END CONFIGURATION: (OTHER CONFIGURATIONS AVAILABLE UPON REQUEST)</p> <p>DIMENSION 'A' _____</p> <p>DIMENSION 'B' (DIA) _____</p> <p>END RADIUS 'R' _____</p> <p>PICKUP LENGTH 'E' _____</p> <p>10. FINISH _____</p> <p>11. OPERATING TEMP. _____ °F/°C</p> <p>12. OTHER: _____</p> |
|--|---|

QUANTITY TO QUOTE FOR _____

CUSTOMER NAME:		A/C No:	ENQUIRY TAKEN BY:
CUSTOMER CONTACT			DATE TO SUPPLIER:
TEL No:	EMAIL:		DATE PRICE RECEIVED: